



17 **Electric Cylinders 25 Direct**



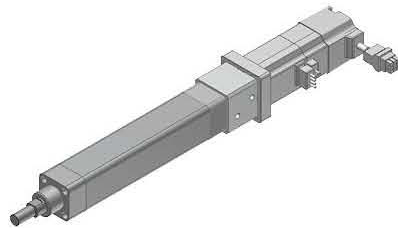
Electric Cylinders 25 Parallel



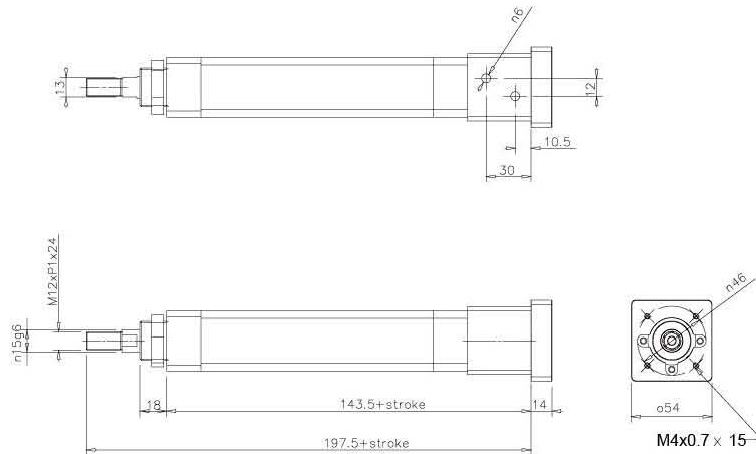
18

ENCE-25-400-0802-D

Electric Cylinders 25 Direct

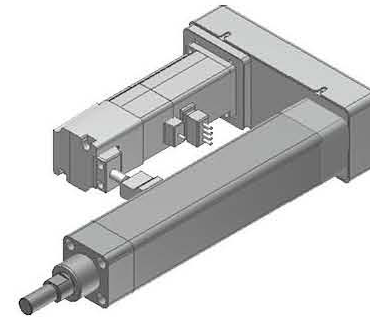


Power Output [W]	100W	200W
Torque [Nm]	0.32	0.64
Spindle Level	C7 Spindle axes	
Drive Function	Spindle axes	
Repetition Accuracy [mm]	±0.02	
Spindle Diameter [mm]	8	
Pitch [mm]	2	
Max. Speed [mm/s]	100	
Max. Loads [kg]	X-axis	70 150
	Z-axis	70 150
Max. Feed Force [N]	800	1700
Stroke [mm]	1-500	

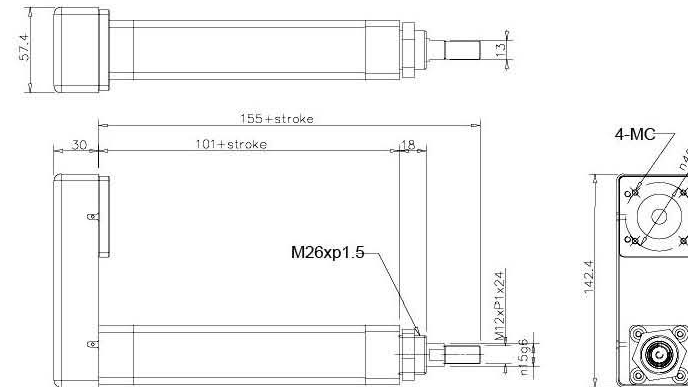


ENCE-25-400-0802-P

Electric Cylinders 25 Parallel



Power Output [W]	100W	200W
Torque [Nm]	0.32	0.64
Spindle Level	C7 Spindle axes	
Drive Function	Spindle axes	
Repetition Accuracy [mm]	±0.02	
Spindle Diameter [mm]	8	
Pitch [mm]	2	
Max. Speed [mm/s]	100	
Max. Loads [kg]	X-axis	70 150
	Z-axis	70 150
Max. Feed Force [N]	800	1700
Stroke [mm]	1-500	

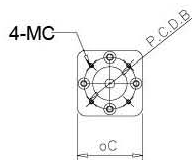
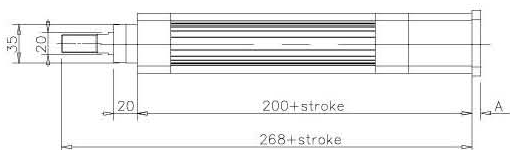
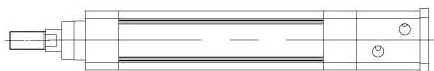


ENCE-40-400-1210-D

Electric Cylinders 40 Direct



Power Output [W]	100W	200W	400W
Torque [Nm]	0.32	0.64	1.3
Spindle Level	C7 Spindle axes		
Drive Function	Spindle axes		
Repetition Accuracy [mm]	±0.02		
Spindle Diameter [mm]	12		
Pitch [mm]	10		
Max. Speed [mm/s]	500		
Max. Loads [kg]	X-axis	25	60
	Z-axis	25	60
Max. Feed Force [N]	170	340	690
Stroke [mm]	1-800		



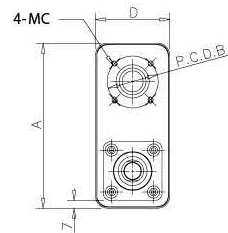
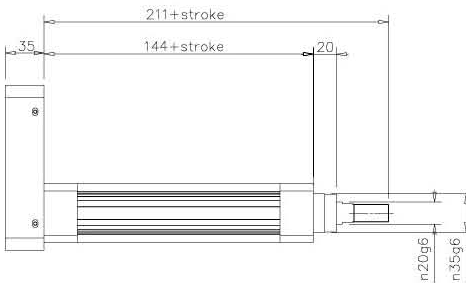
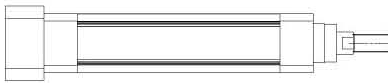


ENCE-40-400-1210-P

Electric Cylinders 40 Parallel



Power Output [W]	100W	200W	400W
Torque [Nm]	0.32	0.64	1.3
Spindle Level	C7 Spindle axes		
Drive Function	Spindle axes		
Repetition Accuracy [mm]	±0.02		
Spindle Diameter [mm]	12		
Pitch [mm]	10		
Max. Speed [mm/s]	500		
Max. Loads [kg]	X-axis	25	60
	Z-axis	25	60
Max. Feed Force [N]	170	340	690
Stroke [mm]	1-800		

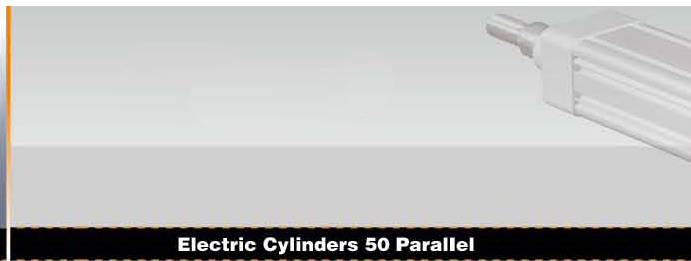




23 **Electric Cylinders 50 Basic**



Electric Cylinders 50 Parallel



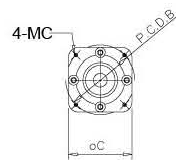
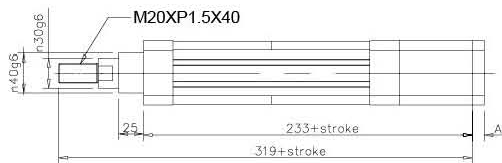
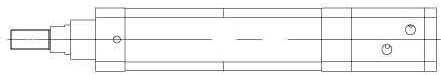
24

ENCE-50-400-1605-D

Electric Cylinders 50 Direct



Power Output [W]	200W	400W	750W
Torque [Nm]	0.64	1.3	2.4
Spindle Level	C7 Spindle axes		
Drive Function	Spindle axes		
Repetition Accuracy [mm]	±0.02		
Spindle Diameter [mm]	16		
Pitch [mm]	5		
Max. Speed [mm/s]	250		
Max. Loads [kg]	X-axis	60	130
	Z-axis	60	130
Max. Feed Force [N]	X-axis	680	1380
	Z-axis	680	1380
Stroke [mm]	1-1200		

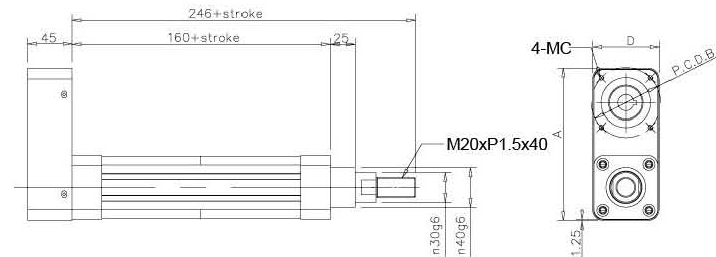
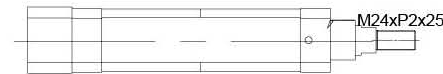


ENCE-50-400-1605-P

Electric Cylinders 50 Parallel



Power Output [W]	200W	400W	750W
Torque [Nm]	0.64	1.3	2.4
Spindle Level	C7 Spindle axes		
Drive Function	Spindle axes		
Repetition Accuracy [mm]	±0.02		
Spindle Diameter [mm]	16		
Pitch [mm]	5		
Max. Speed [mm/s]	250		
Max. Loads [kg]	X-axis	60	130
	Z-axis	60	130
Max. Feed Force [N]	X-axis	680	1380
	Z-axis	680	1380
Stroke [mm]	1-1200		



ENCE-63-400-2010-D

Electric Cylinders 63 Direct



Power Output [W]	200W	400W	750W
Torque [Nm]	0.64	1.3	2.4
Spindle Level	C7 Spindle axes		
Drive Function	Spindle axes		
Repetition Accuracy [mm]	±0.02		
Spindle Diameter [mm]	20		
Pitch [mm]	10		
Max. Speed [mm/s]	500		
Max. Loads [kg]	X-axis	30	60
	Z-axis	30	60
Max. Feed Force [N]	340	680	1380
Stroke [mm]	1-1200		

