

INDEX



EU Series



EU Spindle Axes
P2-7



EU Toothed Belt Axes
P8-15



Electric Cylinders
P16-27

JP Series



JP Spindle Axes
P29-46



JP Sealed Spindle Axes
P47-58



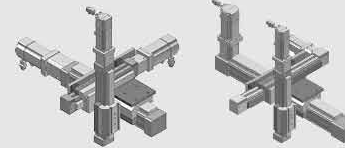
JP Toothed Belt Axes
P59-70



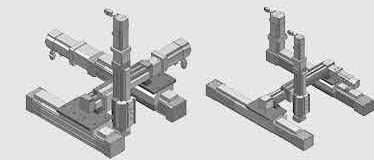
JP Sealed Toothed Belt Axes
P71-78

Industrial Robot

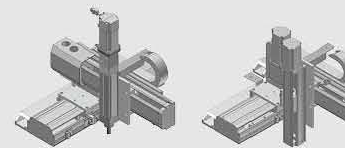
EU 3-Axes Cantilever application
P79-82



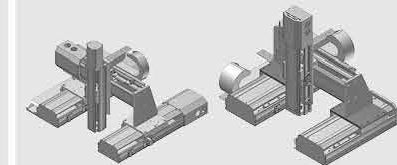
EU 3-Axes Gantry application
P83-86



JP 3-Axes Cantilever application
P87-90



JP 3-Axes Gantry application
P91-94



Product Application:

E-MC electric cylinder is widely used in many industries. It works for general equipments including as follows:

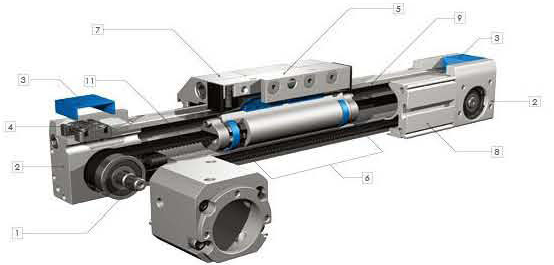
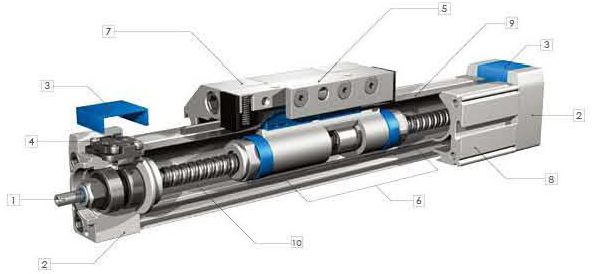
Automatic tin welding machine, screw lock machine, parts box to pick and place from shelf, small stack machine, sticky coating machine, spare parts Pick-and-place handling, the CCD lens movement, automatic spraying machines, automatic loading and unloading devices, cutting machine, electronic components production equipment small assembly line, small pressure units, spot welding machine, surface membrane attached process, automatic labeling machine, liquid material perfusion packing, spare parts testing equipment, production line workpiece sort out device, packaging machines, engraving machine, conveyor belt shifter, workpiece cleaning device, etc.



1 **EU MODEL Cylinder Diagram & MODEL-TYPE**

EU Series Cylinder Diagram

- 1 Spindle driver
- 2 End cap
- 3 Plastic cover
- 4 Cover strip
- 5 Slide
- 6 Abrasion ring
- 7 Extended slide
- 8 Cylinder body
- 9 Steel cover
- 10 Spindle
- 11 Toothed belt



MODEL-TYPE EU type Sliders Cylinder

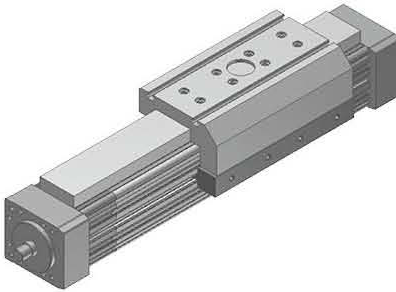
example: EU Toothed Belt Axes 25 Advance R Parallel

EGE	-	25	-	400	-	SP	-	KF	-	D	
DRIVER FUNCTION:		BORE		STROKE: mm		TYPE:		ADVANCE:		SERVO MOTOR SETUP:	
EGE		spindle axes & toothed belt axes cylinder				SP		spindle axes wide guide		D	direct
ENCE		electric cylinder				TB		toothed belt axes		P	parallel

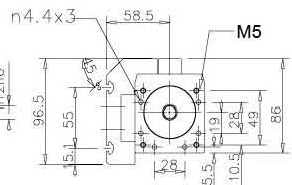
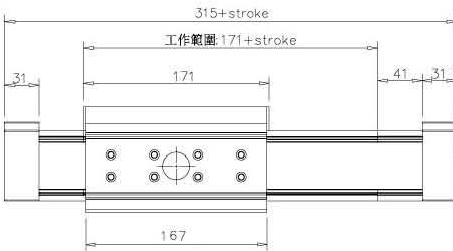
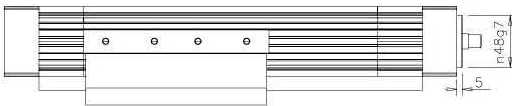


EGE-40-400-SP-KF

EU Spindle Axes 40 Advance W Parallel



Power Output [W]	200W	400W	750W
Torque [Nm]	0.64	1.3	2.4
Spindle Level	C7 Spindle axes		
Drive Function	Spindle axes		
Repetition Accuracy [mm]	±0.02		
Spindle Diameter [mm]	20		
Pitch [mm]	10		
Max. Speed [mm/s]	500		
Max. Loads [kg]	X-axis	35	65
	Z-axis	20	35
Max. Feed Force [N]	340	690	1280
Stroke [mm]	1-1500		

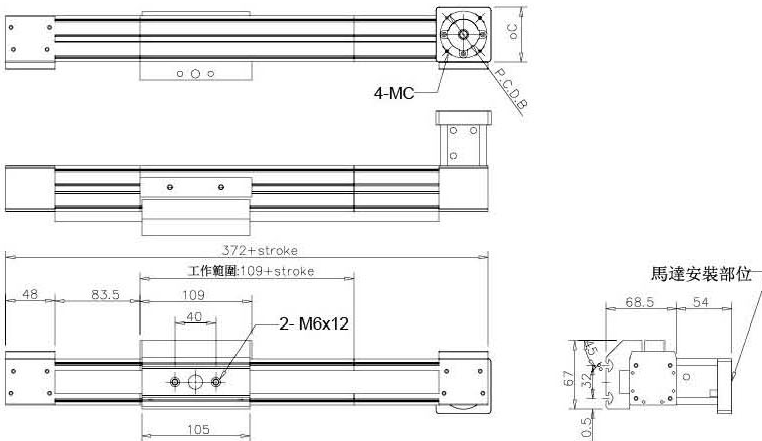


EGE-25-400-TB-KF-D

EU Toothed Belt Axes 25 Advance W Parallel Direct



Power Output [W]	100W	200W	400W	
Torque [Nm]	0.32	0.64	1.3	
Pulley Stroke (mm)	63			
Drive Function	Toothed belt axes			
Repetition Accuracy [mm]	±0.1			
Belt Size [mm]	15			
Belt Pitch [mm]	3			
Max. Speed [mm/s]	3000			
Best Speed [mm/s]	1000/2000			
Max. Loads [kg]	X-axis	20	25	45
	Z-axis	3	6	10
Max. Feed Force [N]	100/50	200/100	400/200	
Stroke [mm]	1-3000			

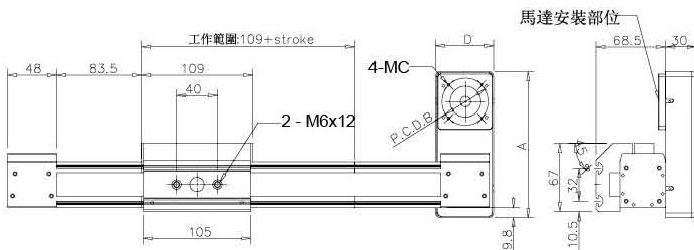
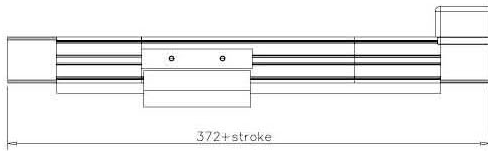


EGE-25-400-TB-KF-P

EU Toothed Belt Axes 25 Advance W Parallel Parallel

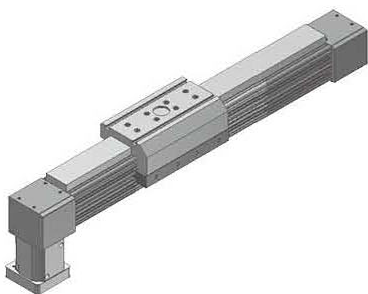


Power Output [W]	100W	200W	400W
Torque [Nm]	0.32	0.64	1.3
Pulley Stroke (mm)	63		
Drive Function	Toothed belt axes		
Repetition Accuracy [mm]	±0.1		
Belt Size [mm]	15		
Belt Pitch [mm]	3		
Max. Speed [mm/s]	3000		
Best Speed (mm/s)	1000/2000		
Max. Loads [kg]	X-axis	20	25
	Z-axis	3	6
Max. Feed Force [N]	100/50	200/100	400/200
Stroke [mm]	1-3000		



EGE-40-400-TB-KF-D

EU Toothed Belt Axes 40 Advance W Parallel Direct



Power Output [W]	400W	750W	1000W
Torque [Nm]	1.3	2.4	4.78
Pulley Stroke (mm)	100		
Drive Function	Toothed belt axes		
Repetition Accuracy (mm)	±0.1		
Belt Size [mm]	25		
Belt Pitch [mm]	5		
Max. Speed [mm/s]	5000		
Best Speed (mm/s)	1000/2000		
Max. Loads [kg]	X-axis	45	55
	Z-axis	12	15
Max. Feed Force [N]	400/200	760/380	1000/500
Stroke [mm]	1-4000		

