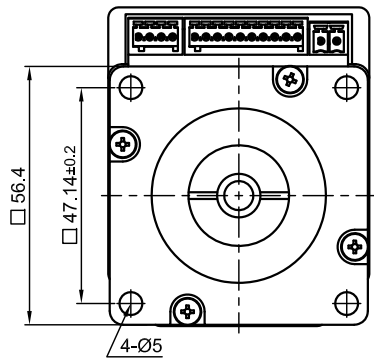
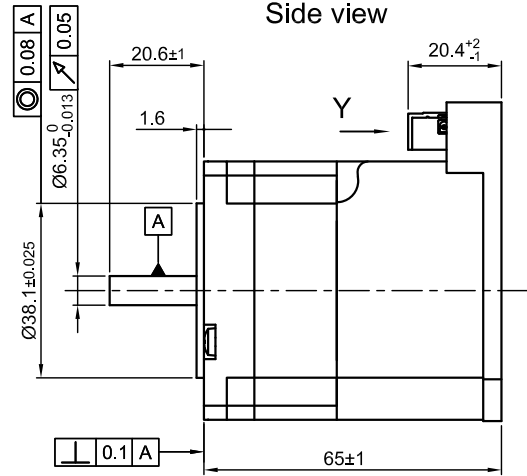


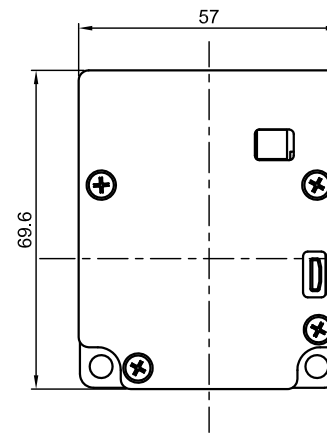
Front view and mounting



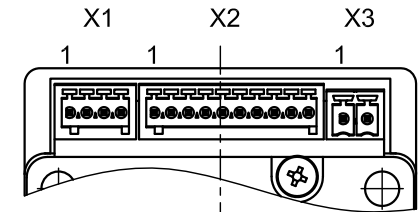
Side view



Rear view

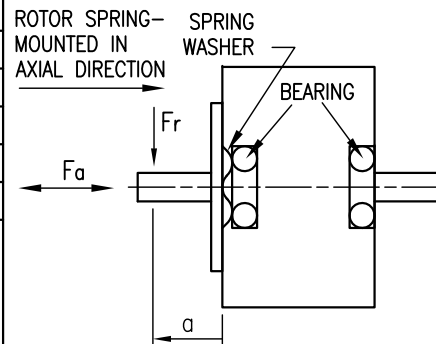


Y view



CONNECTION	BIPOLAR
SPECIFICATION	
VOLTAGE (VDC)	12 TO 48
AMPS/PHASE(A)	4.2
HOLDING TORQUE (Nm) [lb-in]	0.537 [4.752]
DETENT TORQUE (Nm) [lb-in]	0.0147 [0.13]
STEP ANGLE (°)±ACCURACY	1.8±5% TO MICROSTEP
WEIGHT (Kg) [lb]	0.6 [1.32]

PERMISSIBLE RADIAL+AXIAL FORCE



OVERTEMPERATURE PROTECTION (ELECTRONICS): 75°C	
AMBIENT TEMPERATURE -10°~ 50°C [14°F ~ 122°F] (HIGHER TEMPERATURE REDUCES DUTY CYCLE)	
INSULATION RESISTANCE 100 MOhm (UNDER NORMAL TEMPERATURE AND HUMIDITY)	
INSULATION CLASS B 130° [266°F]	
DIELECTRIC STRENGTH 500VAC FOR 1 MIN. (BETWEEN THE MOTOR COILS AND THE MOTOR CASE)	
AMBIENT HUMIDITY MAX. 85% (NO CONDENSATION)	

AXIAL-FORCE Fa (N)	Fa=10	
DISTANCE a (mm)	20	
RADIAL-FORCE Fr (N)	52	
	AXIAL	RADIAL
SHAFT PLAY (mm)	0.2Max	0.02
AT LOAD MAX: (N)	200	4.5

X1, Phoenix MCV-04	
PIN No.	Function
1	GND
2	Analog Input(0-10V)
3	Output (open drain)
4	+12V (Voltage Output, max.100mA)

X2, Phoenix MCV-10	
PIN No.	Function
1	Input1 (+24V)
2	Input2 (+24V)
3	Input3 (+24V)
4	-Enable +5/+24V
5	Enable +5/+24V
6	-Direction +5/+24V
7	Direction +5/+24V
8	-Clock +5/+24V
9	Clock +5/+24V
10	GND

X3, Phoenix FMC-02	
PIN No.	Function
1	+VCC(12-48V)
2	GND

							APVD	G.M.	01.07.16
							CHKD	L B	01.07.16
				Surface specification DIN ISO 1302	General tolerances DIN ISO 2768-cH	Work piece edge DIN ISO 13715	DRN	GYQ	01.07.16
REV	DESCRIPTION	DATE	DRN				SIGNATURE	DATE	

PLUG&DRIVE MOTOR	
DWG.NO	
PD4-C5918X4204-E-01	